

The Wolfeboro

Room to stretch out



The Wolfeboro – at about 2,500 square feet one of our larger plans – offers enough space for a family to stretch out, and for hosting that preserves privacy for owners and guests alike. Its balanced façade makes quite an impression from the curb with dormered “wings” on each end!

The back of the Wolfeboro, which was named for a New Hampshire town on the banks of the famous Lake Winnepesaukee, is made to capture the view of whatever is in your back yard: a lake, the mountains, or some gardens you have fed with your hands and your heart. A full deck and soaring windows provide opportunities from all over this home to soak it all in.



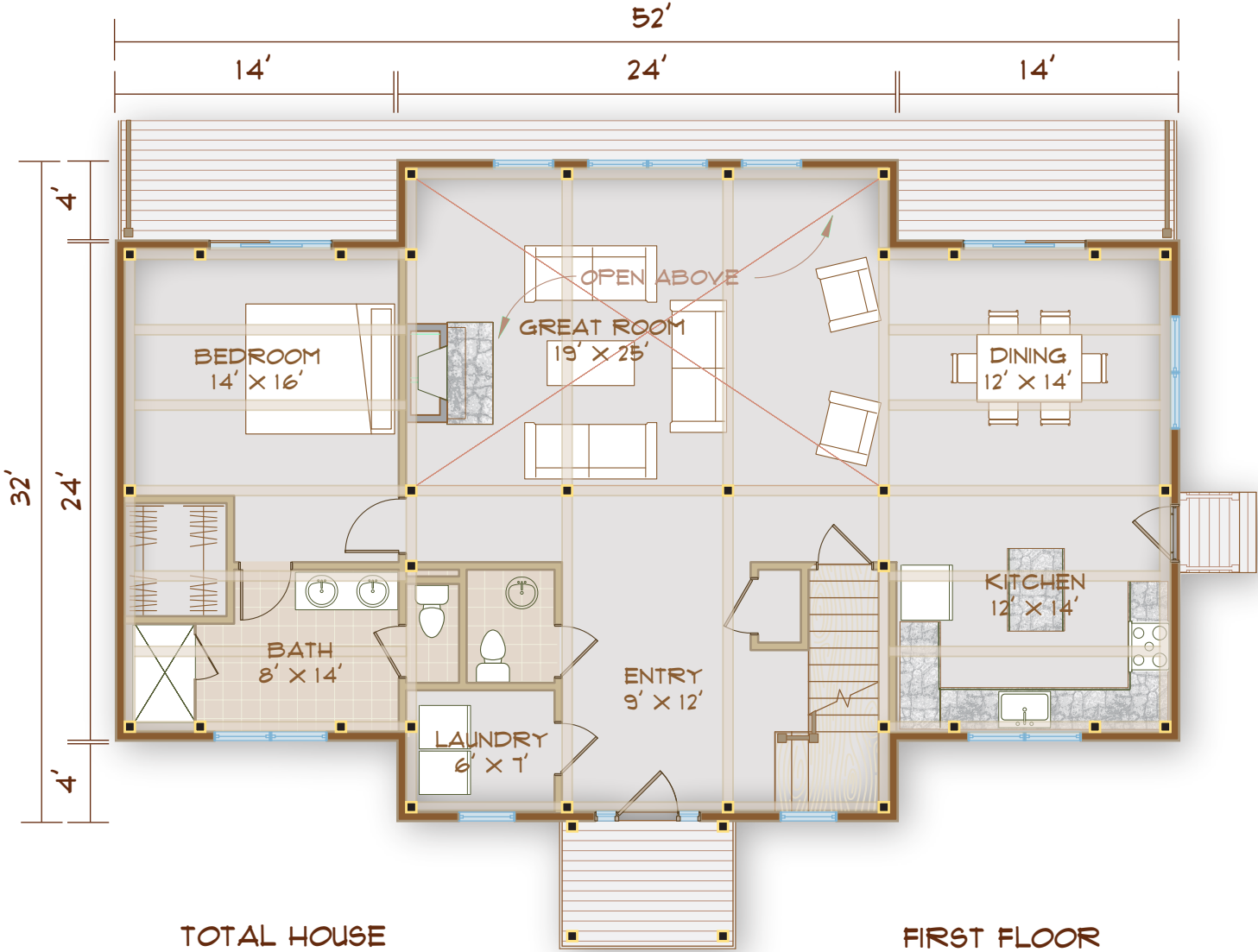
www.brookspostandbeam.com

The Wolfeboro

The Rooms

Of the four bedrooms, two have en-suite baths and one is on the first floor. The first-floor suite has easy access to everything from the yard to the laundry room to the deck, but is situated away from the

bustle of the kitchen. And, at 475 square feet with a vaulted ceiling, the Great Room with a view is truly great!



TOTAL HOUSE
2497 SF
BEDROOMS: 4
BATHS: 3.5

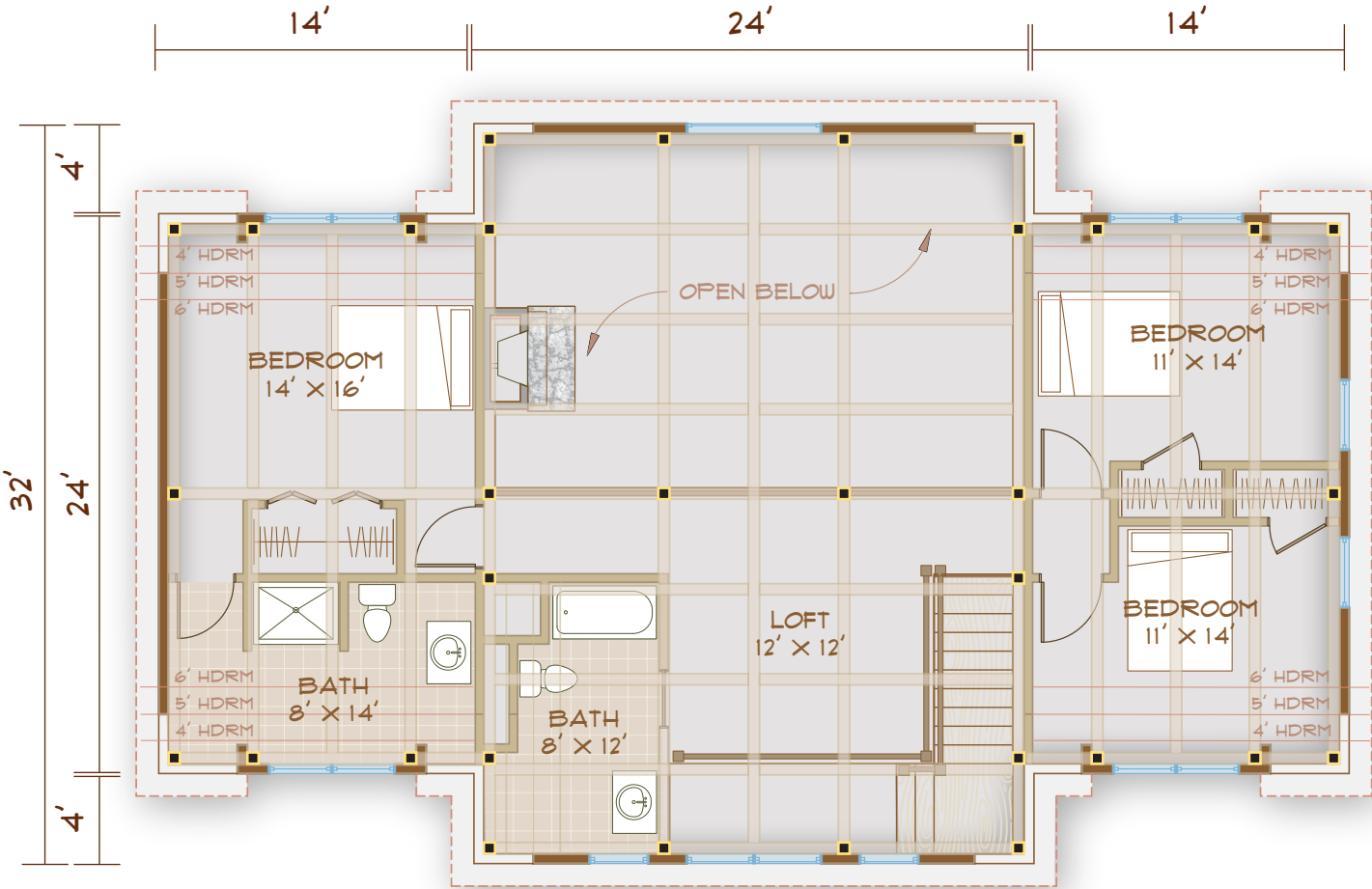
FIRST FLOOR
1441 SF



The Wolfeboro

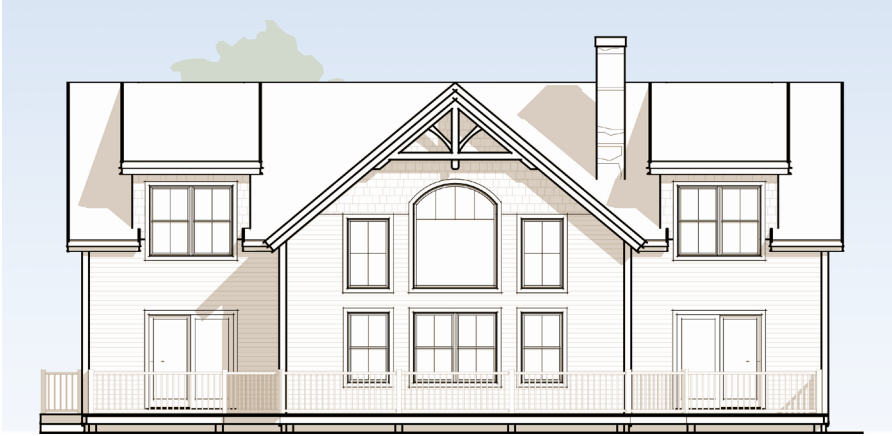
Three more bedrooms upstairs share the loft with that same view. Two share a full bath, while the third would make a perfect guest suite or landing pad for adult children welcomed back home.

Note: Plan can easily be adjusted to connect through a mudroom to a garage.

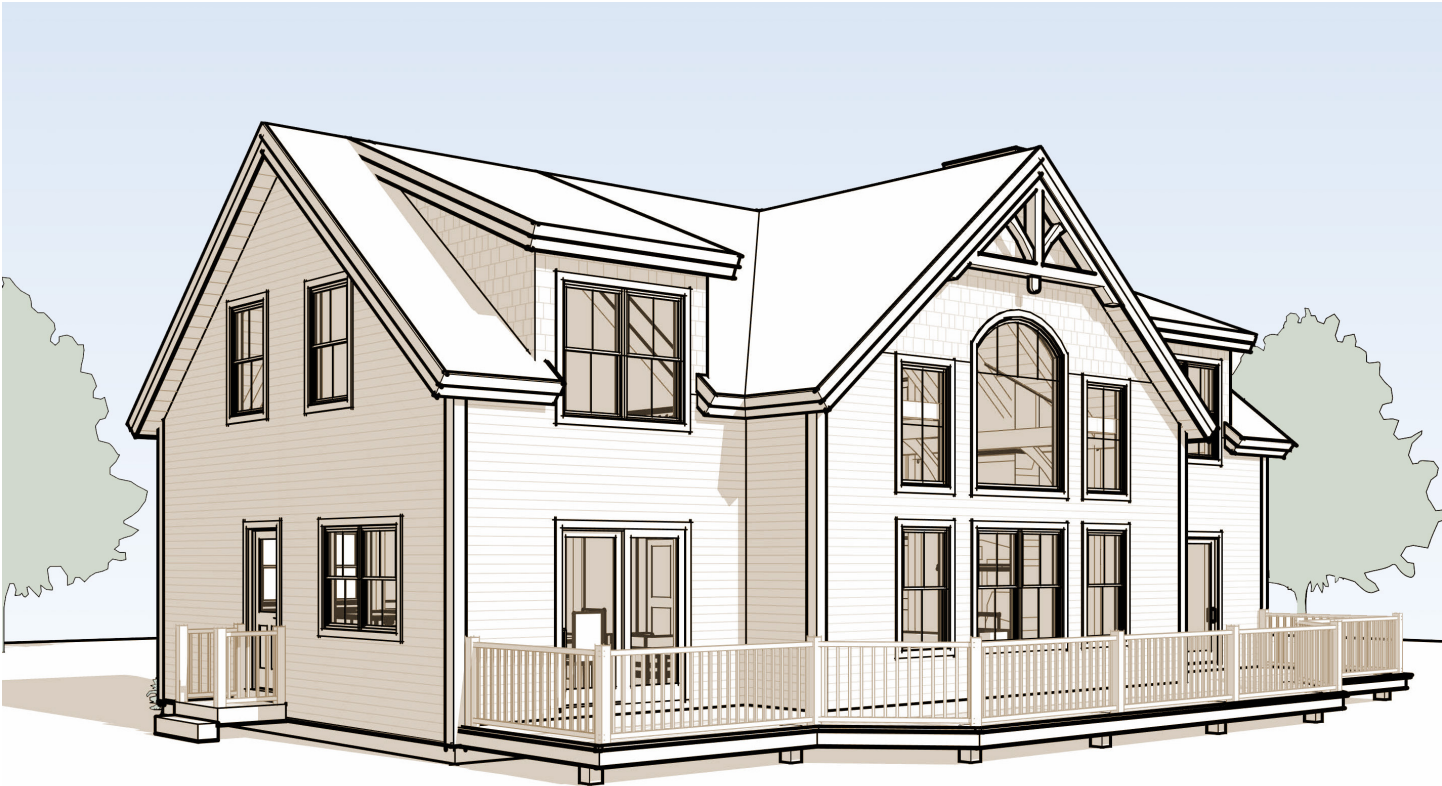


SECOND FLOOR
1056 SF

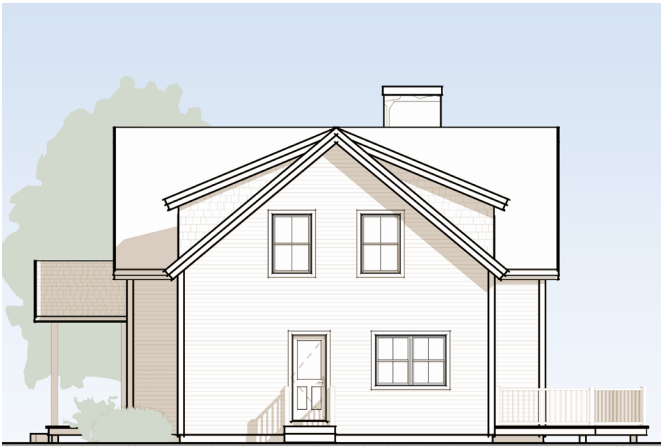
REAR ELEVATION



The Wolfeboro



The Wolfeboro:
Room to stretch out



SIDE
ELEVATIONS

