

Salisbury Solar

Merging the past and the future



The Saltbox was a commonly seen timber frame-style home in early New England towns. Its characteristic steep-sloped roof, created then to ward off heavy snow loads, today can serve an increasingly important new purpose: As a spacious canvas for solar panels.

The panel-side of the roof, at almost 1,100 square feet, faces south to gather all the best rays, but the main entry can be configured for placement where it makes the most sense for your home site: On the Colonial-style face, the low-eave side, or at either gable end.



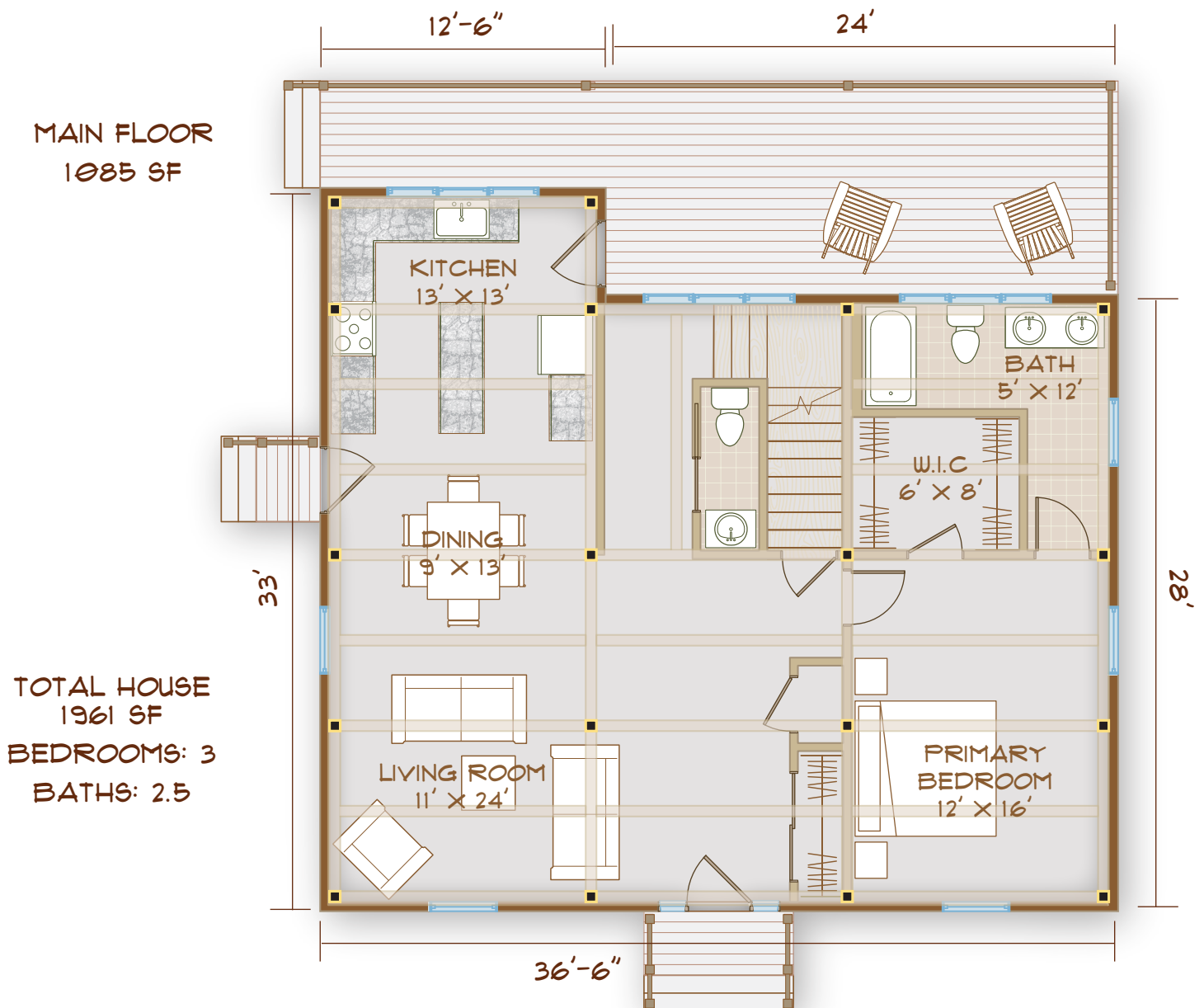
www.brookspostandbeam.com

Salisbury Solar

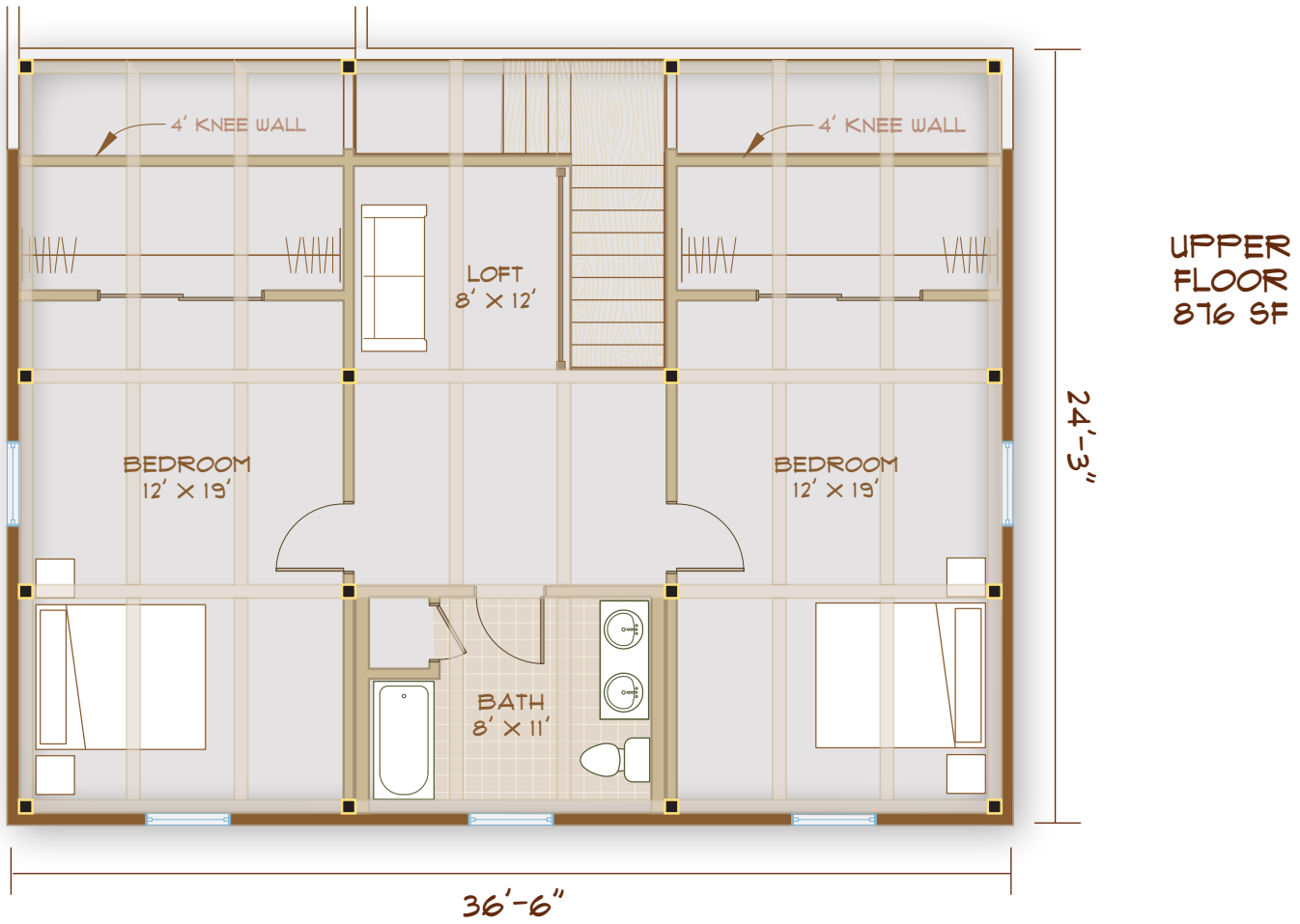
The Rooms

Accessible living is easily achievable here, with almost everything a single person or couple might need all on the compact first floor – a full bedroom suite off the open-plan area encompassing kitchen, dining, and living room.

Never mind the steep slope of the solar roof – a feeling of light and space pours from the loft and open stairwell to the second floor, which still has room for two sizeable bedrooms. Kids or guests staying there share a second full bathroom and a loft that is equally useful as a sitting room or work space.



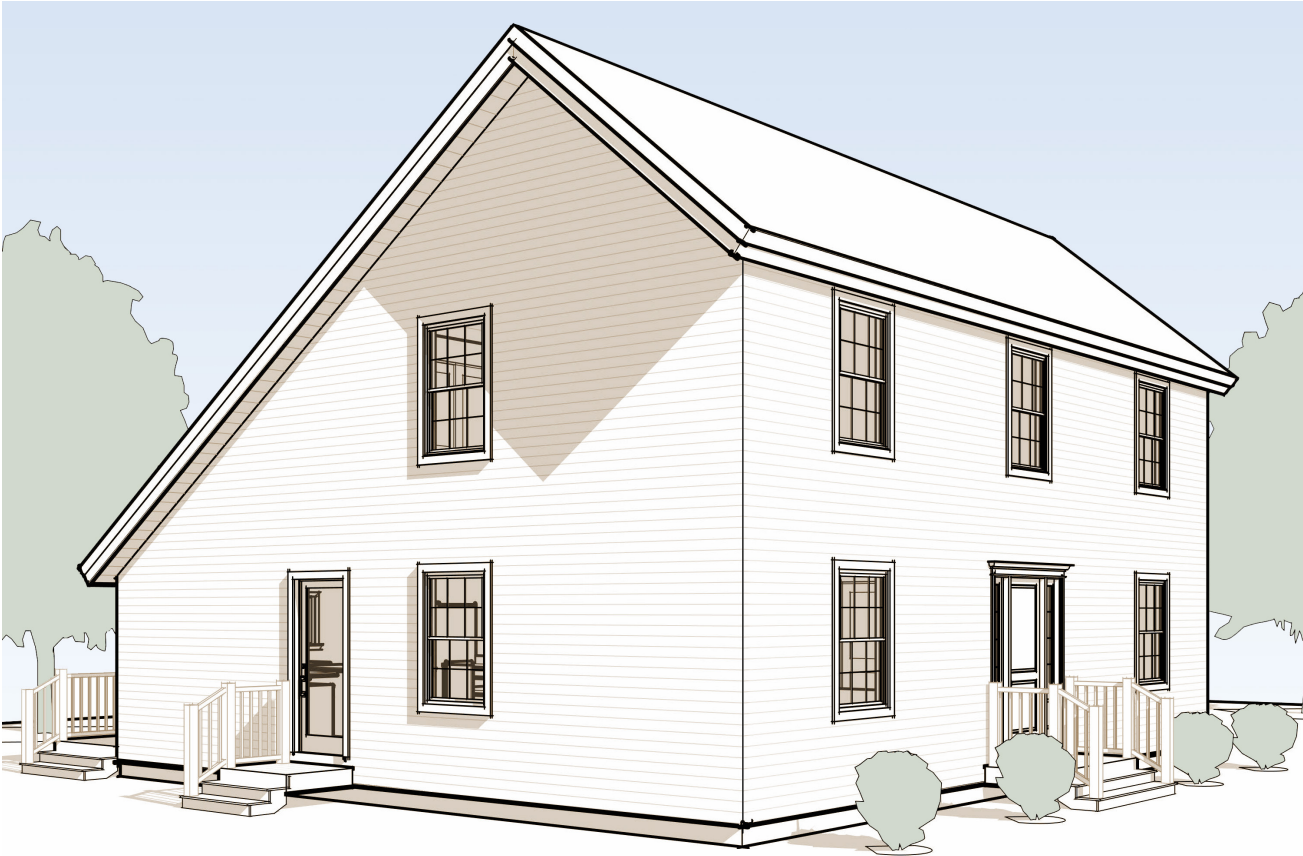
Salisbury Solar



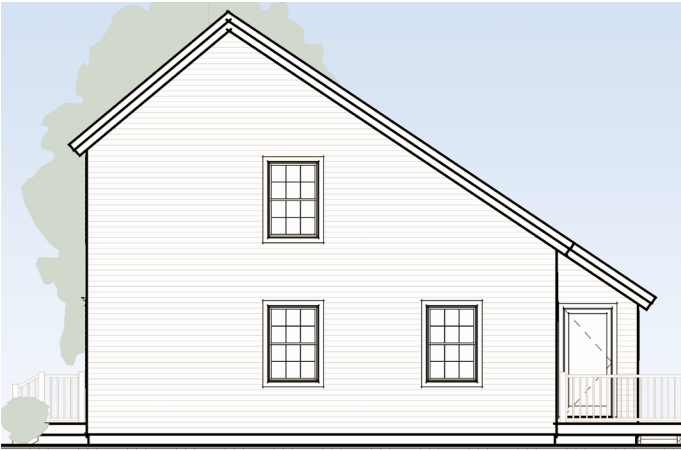
FRONT
ELEVATION



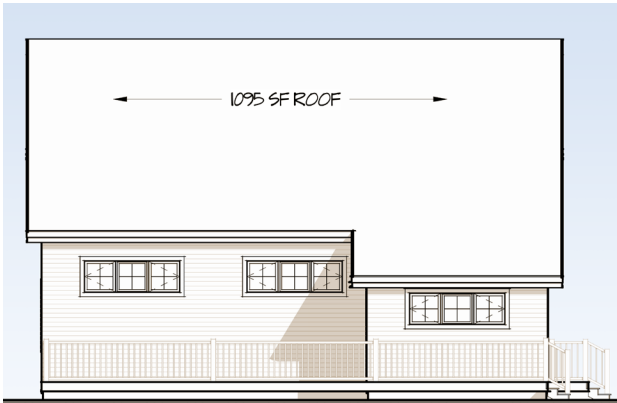
Salisbury Solar



Salisbury Solar:
Merging the past
and the future



SIDE ELEVATION



BACK ELEVATION

