

# The Eaton

The simple life



Originally created as a vacation getaway, The Eaton maximizes open space while including one main bedroom and expansion room into the basement level. It's easily reconfigured – thanks to the flexibility of timber frame design – for two bedrooms on the second floor to use as a retreat for a larger family or a full-time residence.

This home, especially if coupled with a sloped lot for a walkout basement, maximizes views and living space while making a relatively small impact on the land – the footprint is only about 900 square feet.



[www.brookspostandbeam.com](http://www.brookspostandbeam.com)

# The Eaton

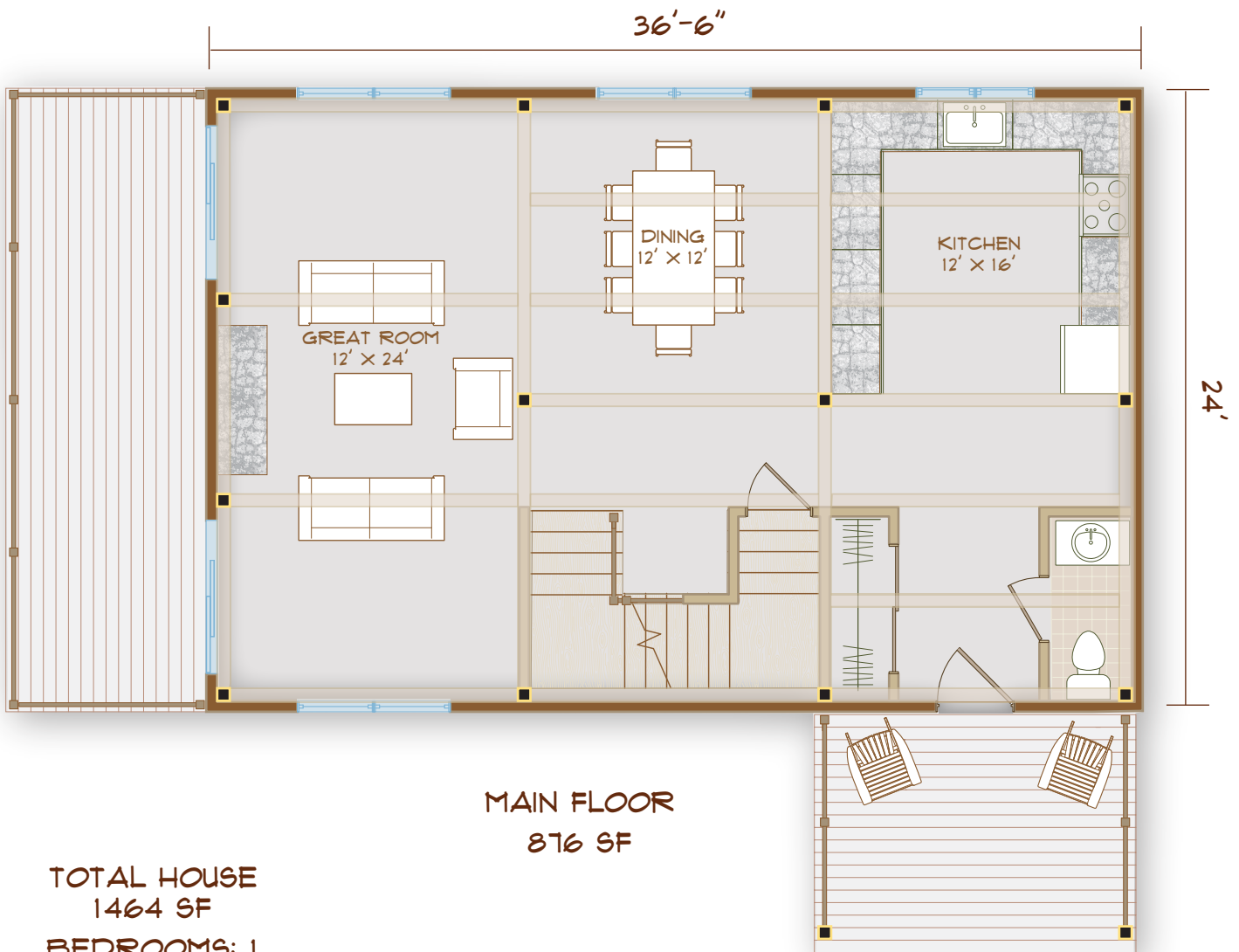
## The Rooms

The entire first floor is devoted to an open floor plan, with a great room and dining room more than large enough for a great party!

Or invite good friends to join you for a weekend in your vacation home, where there's space for big

dinners and game nights, and maybe a bunk room or an added bedroom on the lower level.

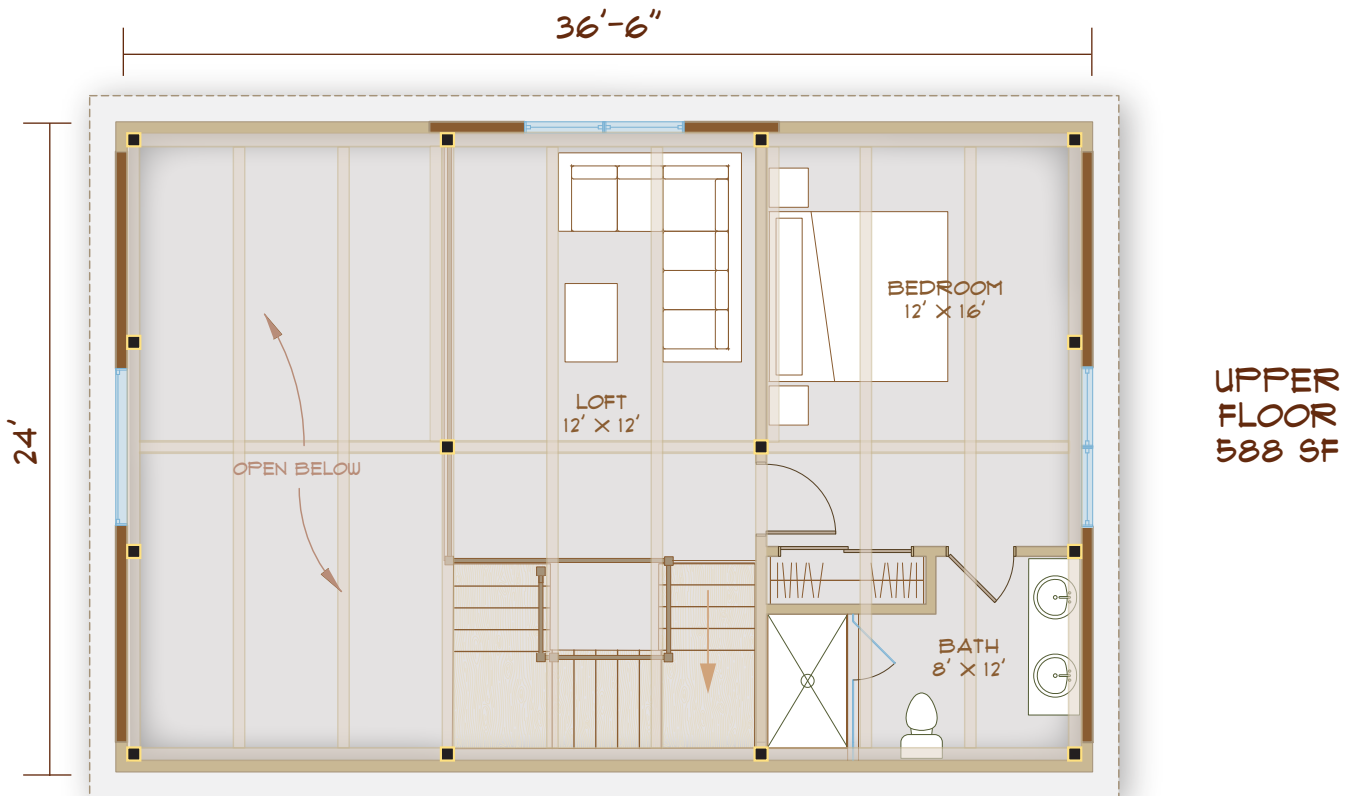
The main bedroom is the primary feature on the second floor, which also has a loft overlooking the great room (and features a view of whatever you



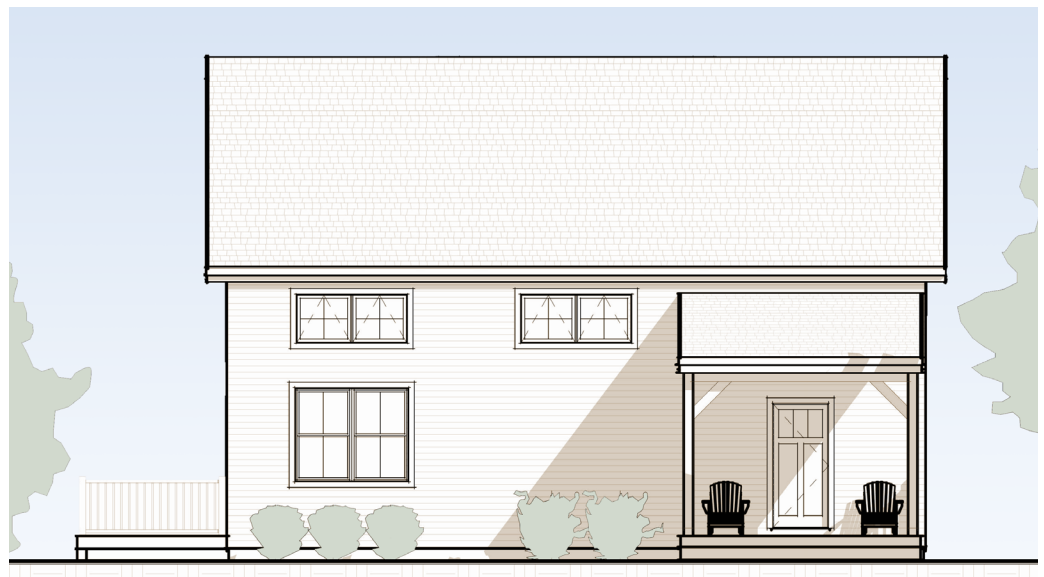
TOTAL HOUSE  
1464 SF  
BEDROOMS: 1  
BATHS: 1.5

# The Eaton

may have out there!) A 3/4 bath is ensuite, or, if you choose to build a second bedroom on the second floor, can be converted to a full bath accessible by both.



FRONT ELEVATION

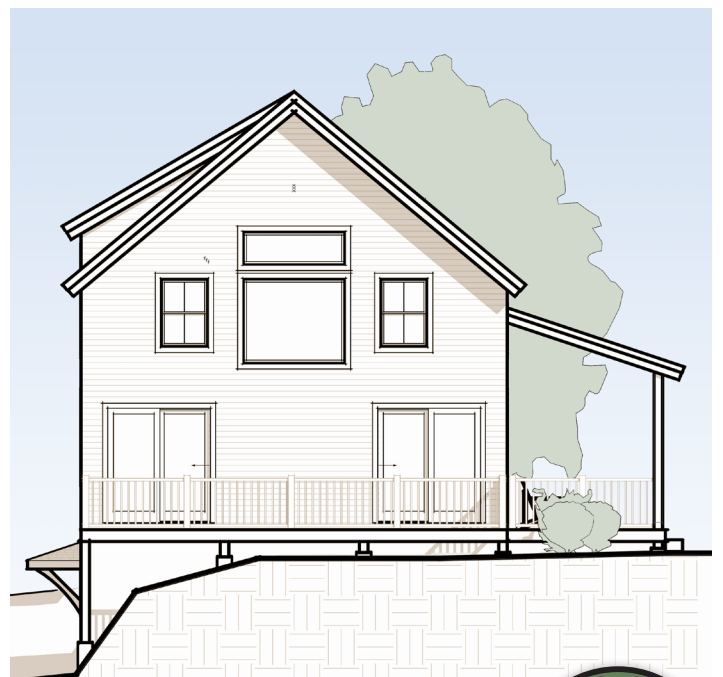


# The Eaton

The Eaton:  
The simple life



REAR ELEVATION



SIDE  
ELEVATION

603-654-3210 • 208 Pettingill Hill Road, Lyndeborough, NH

