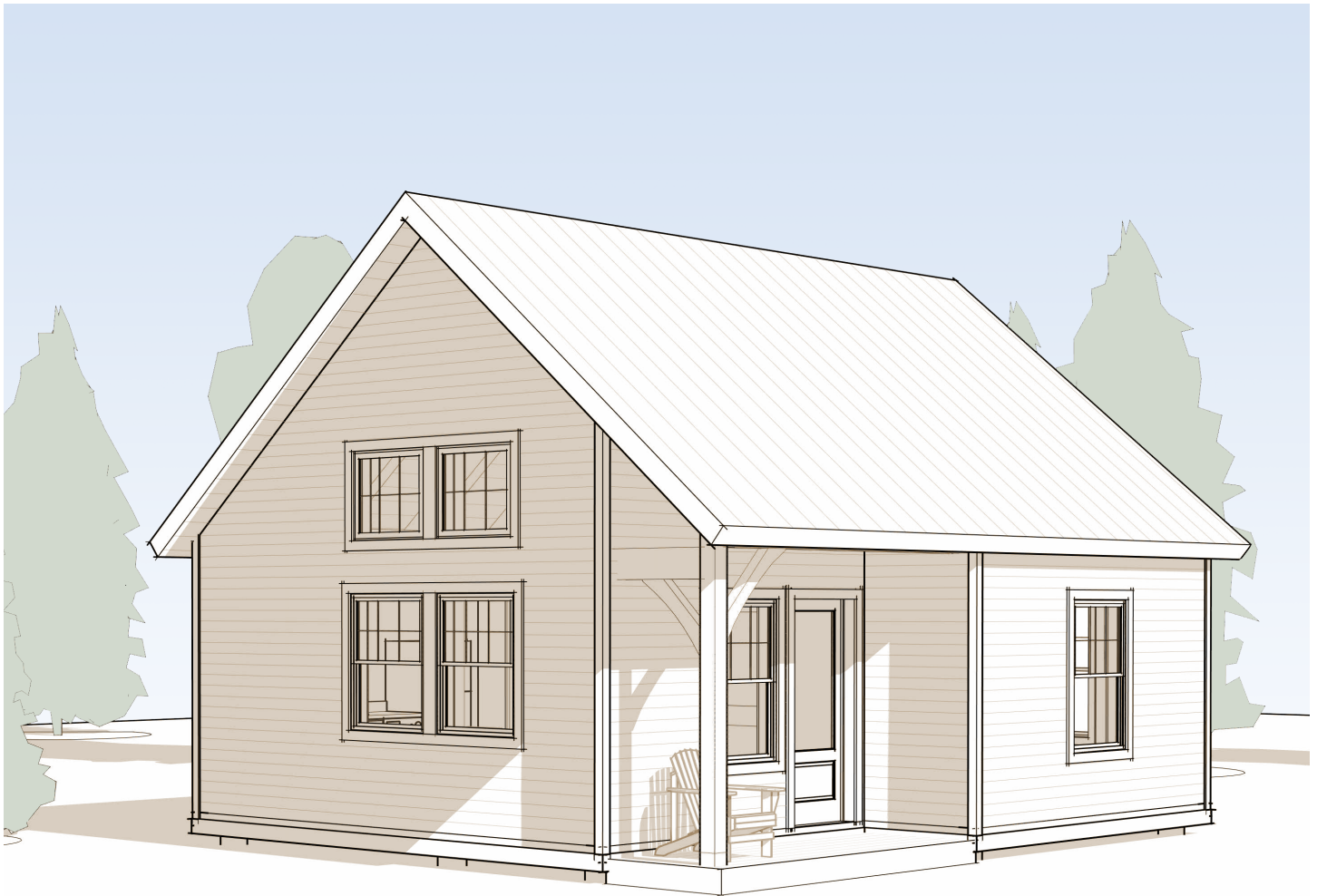


The Cabin

A sweet retreat



20' x 24'

The dream: spending the weekend hunkering down in a cozy retreat in the woods. The Brooks Post & Beam reality: a timber frame cabin that goes up quickly and is always there waiting for you when you need some R&R.

Ranging from a true “tiny home” (240 sq ft plus a

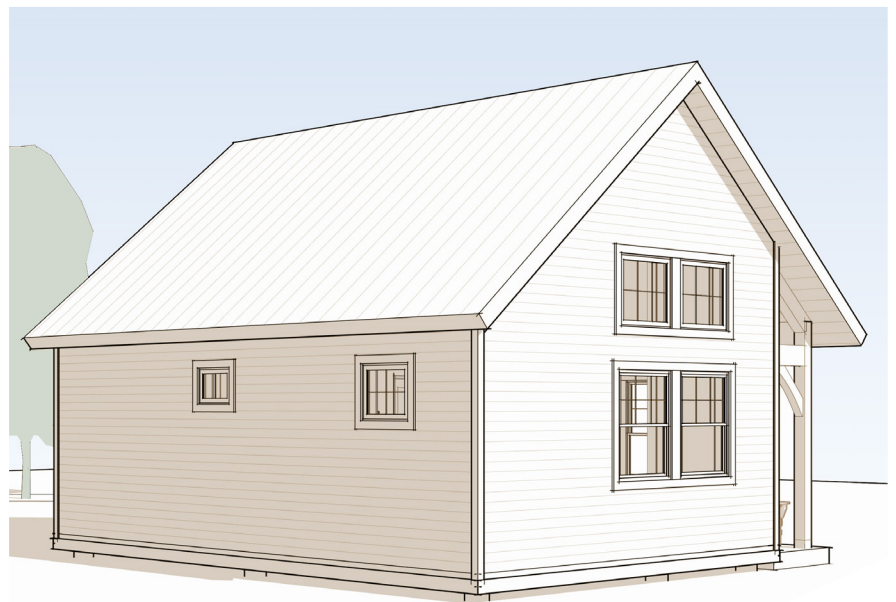
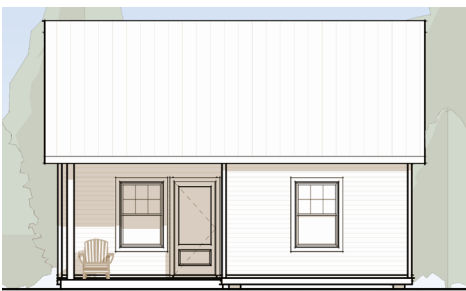
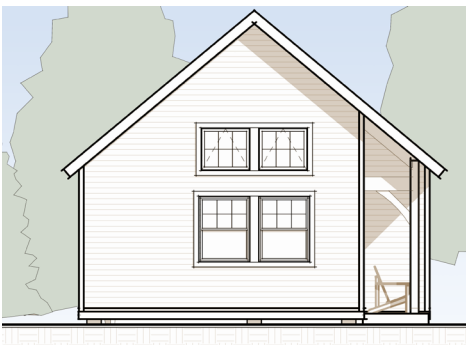
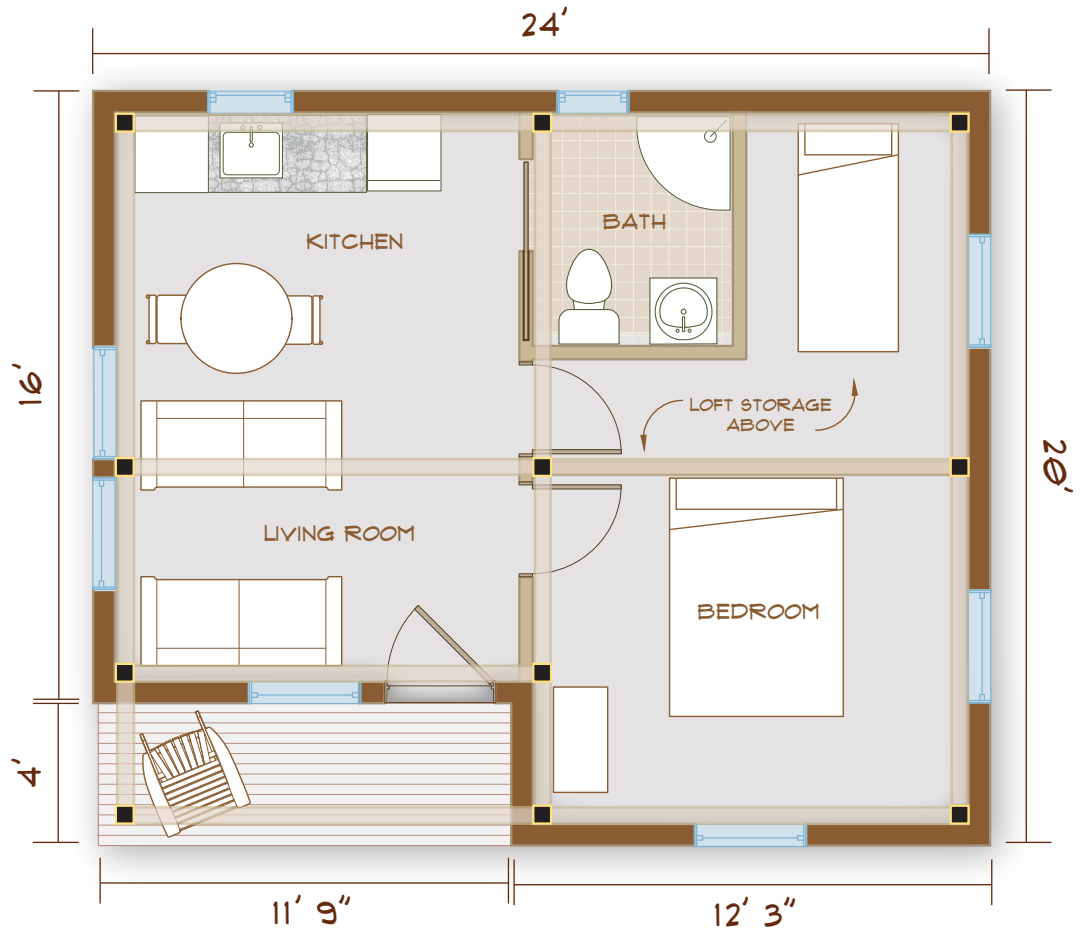
deck) up to a small cabin twice that size with added loft space, Brooks Cabin plans allow for variations on the word “small.” But they’re all equally attractive home bases for any secluded or scenic property. They can also be added to an existing residential property to serve as snug guest quarters, a backyard studio, or home office.



www.brookspostandbeam.com

The Cabin

The largest cabin plan is just big enough for a bunkroom in addition to the bedroom – so no problem creating special memories with the kids in this 480 sq ft getaway. Play board games in the living room if the weather turns gloomy, or invite the young ones to create their own hideaway in the loft.



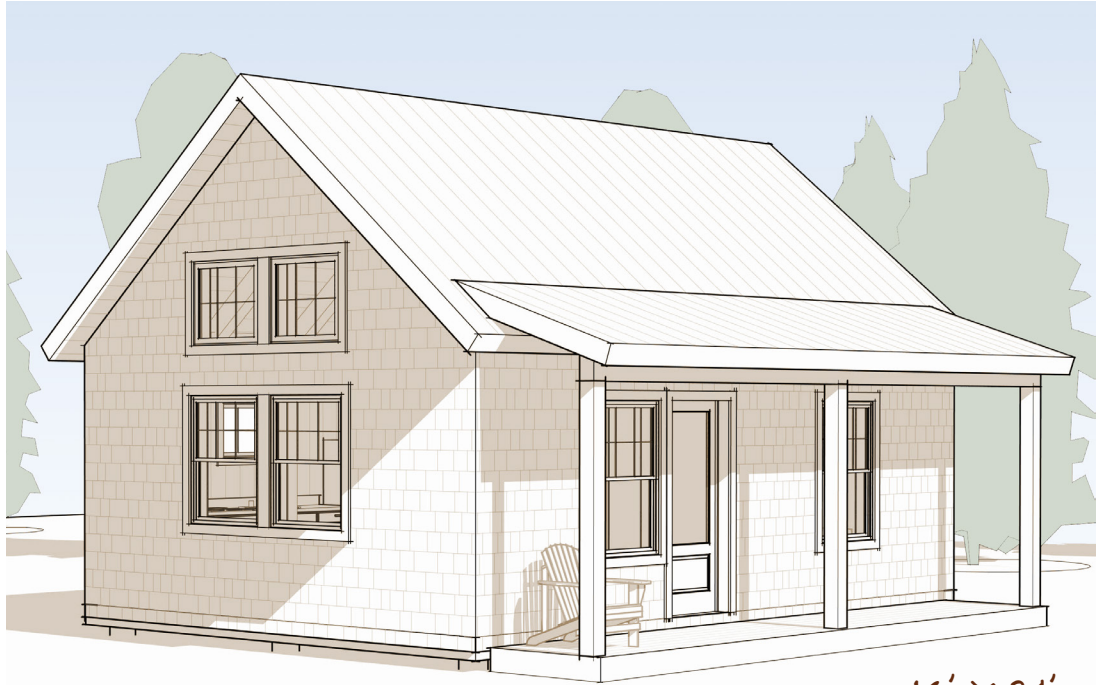
20' x 24'

603-654-3210 • 208 Pettingill Hill Road, Lyndeborough, NH

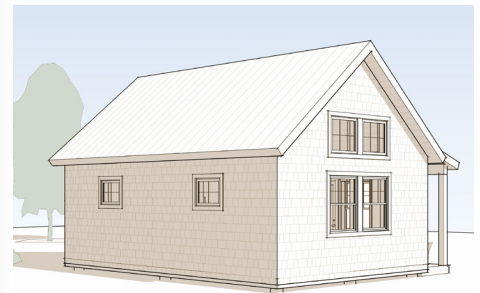
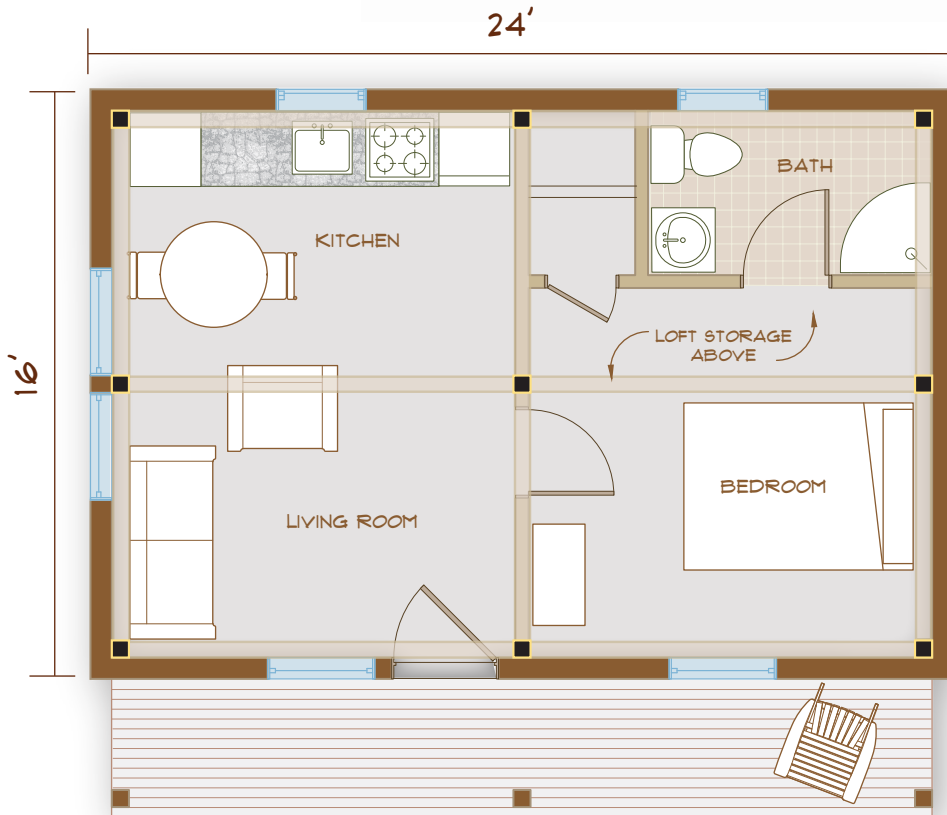


The Cabin

At 16x24 feet, the mid-range cabin provides some storage and a loft, in addition to the bedroom, 3/4 bath, and living areas. There's also a porch to perch on and watch the natural world go by.

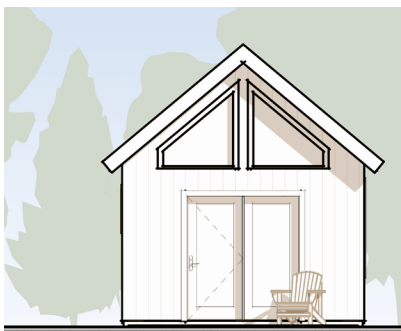
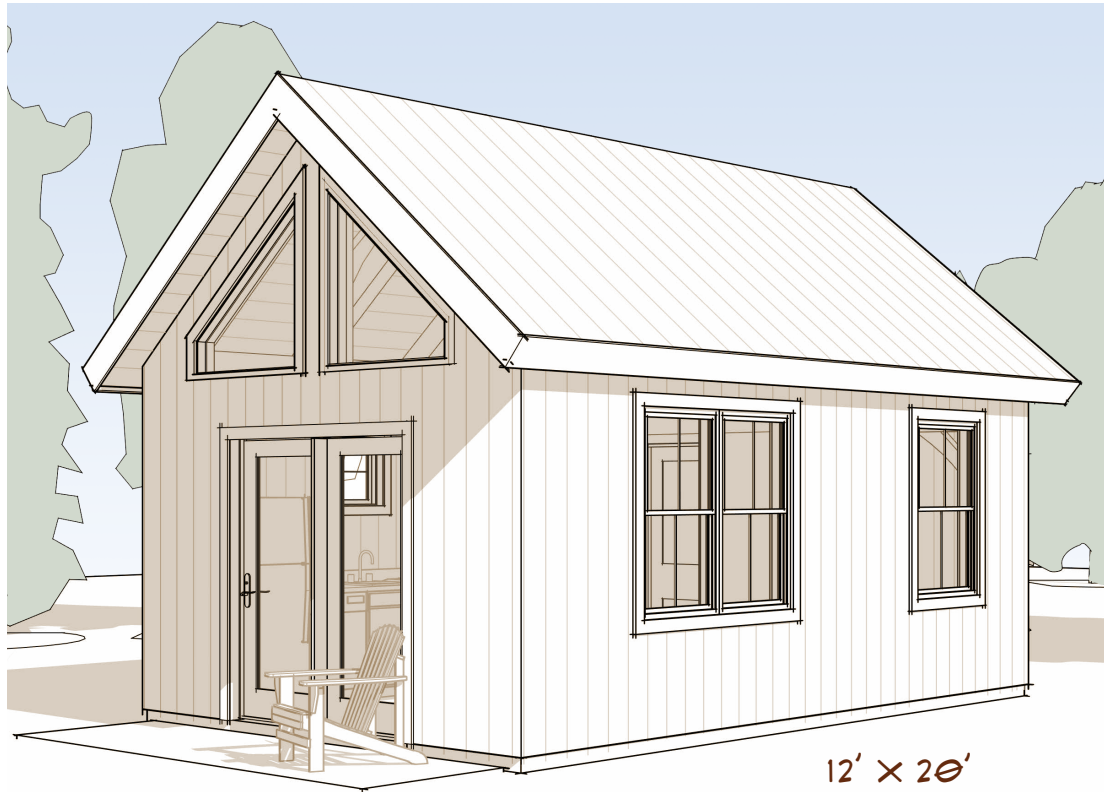


16' X 24'



The Cabin

The tiniest of these designs still offers a comfortable place to sleep, a bath with shower, and a combination living/kitchen area adjacent to the deck. With no second floor, gable-end windows light this space from above.



The Cabin:
A sweet retreat