

The Monadnock with Barn



This variation on The Monadnock kit combines it with The Ell and Attitash Barn kits to create a DIY dream home!

The Monadnock, named after the picturesque southern New Hampshire mountain, was designed with scenic views in mind. Large windows, skylights and a deck allow for appreciation of the surrounding natural world.

For a strong dose of practicality, this version of the popular Monadnock design adds the mid-sized

1-1/2 story Attitash Barn with two bays for cars or large equipment and a second floor that could be used for storage, or as a workshop or play area.

Sandwiching The Ell kit between The Attitash and The Monadnock widens the overall visual appeal. Treat this like a breezeway with some casual seating and potted plants, or, make it your mudroom and expand the kitchen! At 12' x 16', The Ell is large enough to include a first-floor laundry room or bathroom.



www.brookspostandbeam.com

The Monadnock

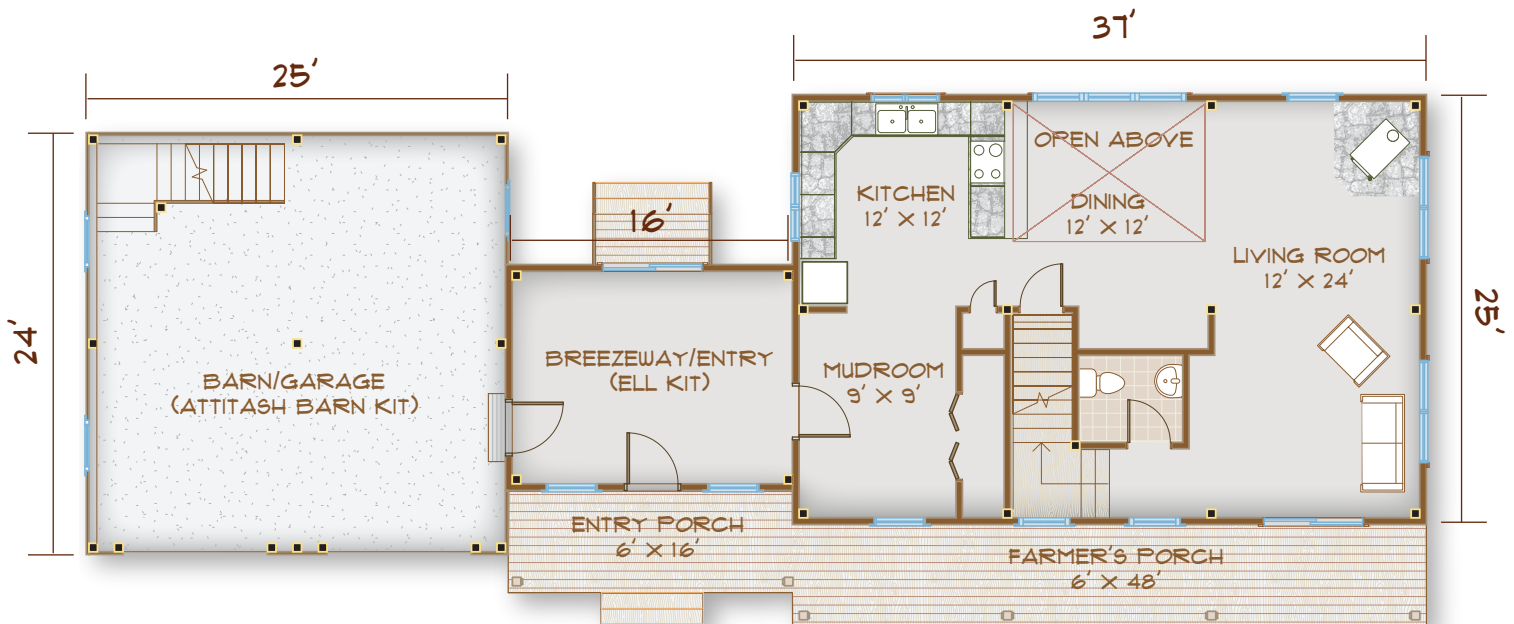
The Rooms

Enjoy sunlight, open spaces, and an appreciation of the outdoors!

Eat under a light-drenched, two-story ceiling in the dining room, conveniently adjacent to both the kitchen and an expansive living room.

The main entry doubles as a mudroom – a little help keeping the floors clean!

The Ell, included in this version of The Monadnock as an enclosed breezeway, connects the house to an appealing and useful barn. Stow farm equipment or your cars here, and turn the second level into an office or exercise space.



BARN
600 SF

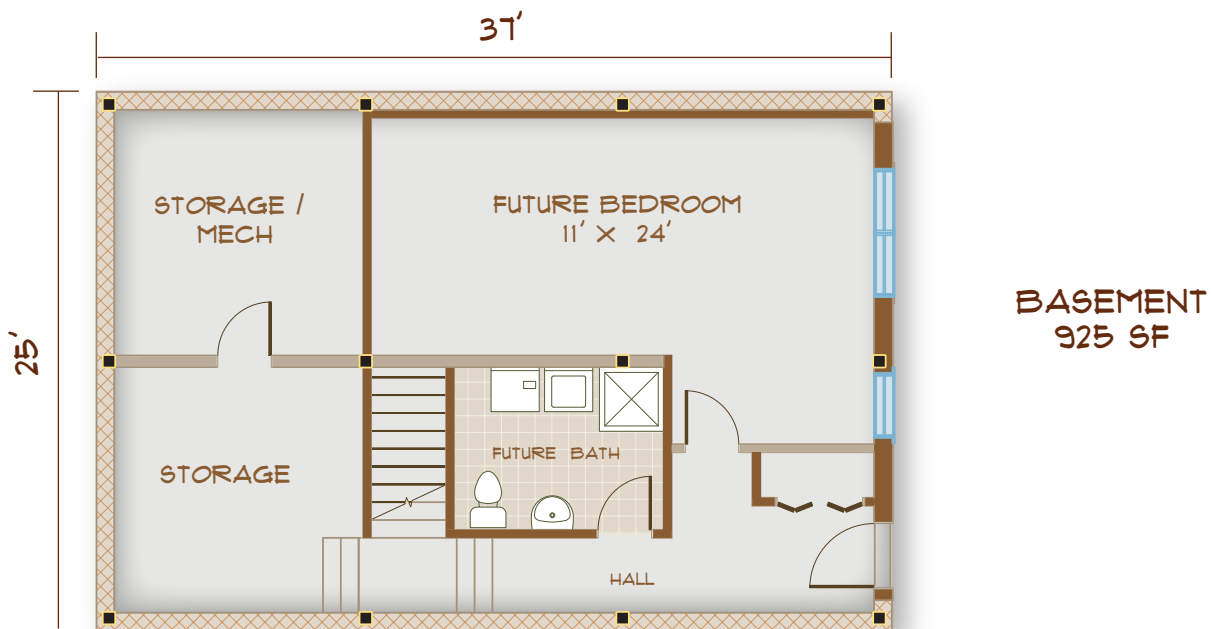
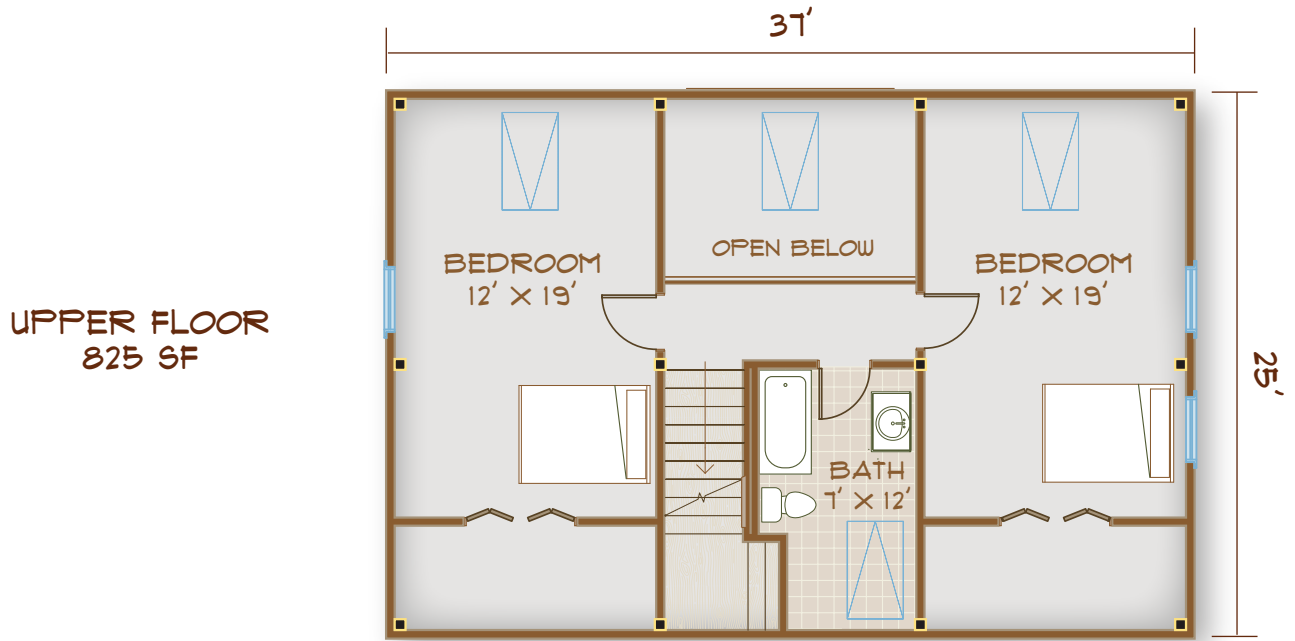
**TOTAL HOUSE
SQUARE FOOTAGE**
(NOT INCLUDING BASEMENT)
1942
BEDROOMS: 2 OR 3
BATHS: 1.5 OR 2.5

MAIN FLOOR
1117 SF

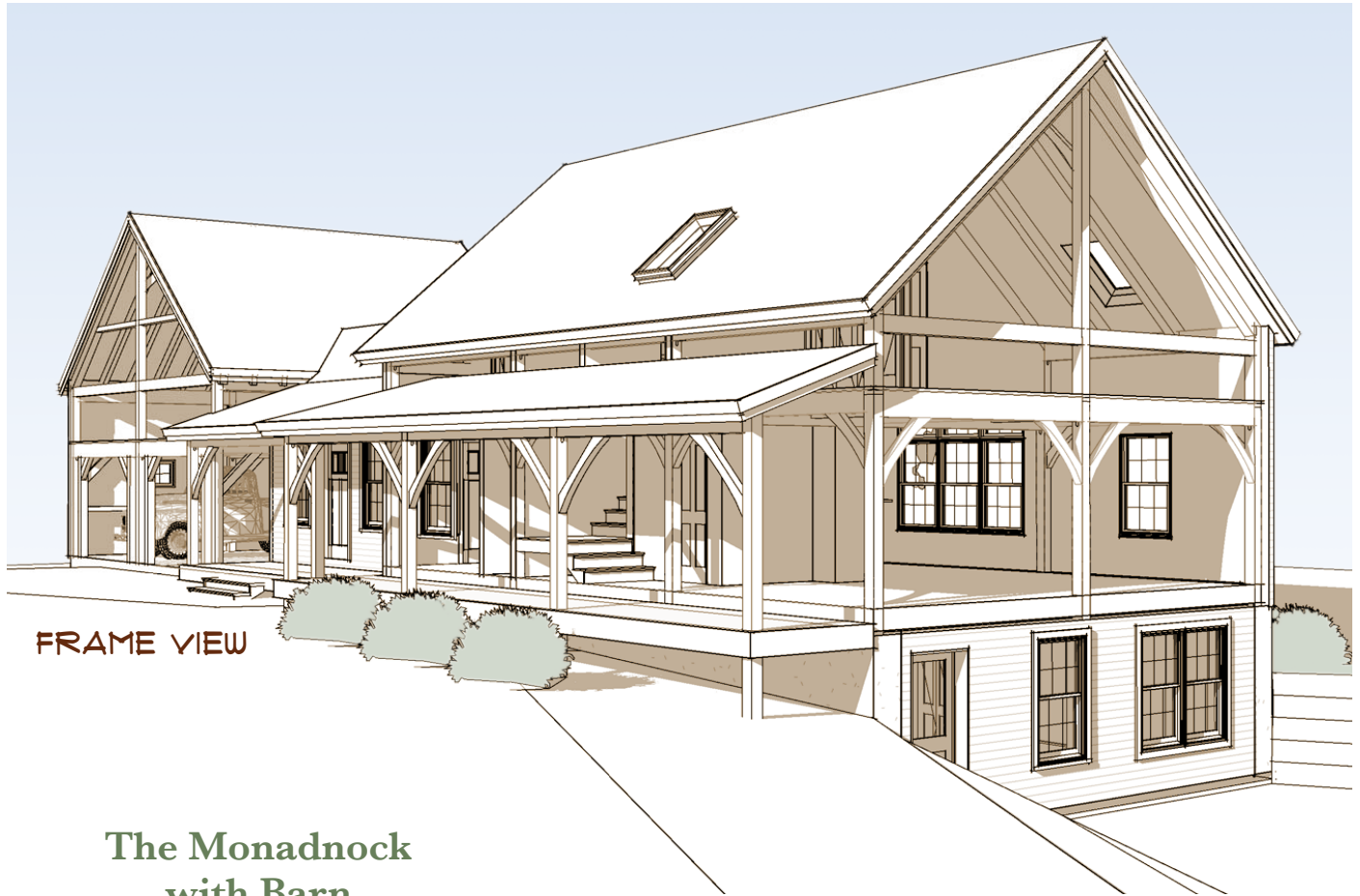
The Monadnock

Both bedrooms and the bathroom on the second floor receive natural light from skylights and offer plenty of room to stretch out.

The walkout basement includes a large bedroom (or bonus room) and full bath with a separate entrance.



The Monadnock



The Monadnock
with Barn



FRONT ELEVATION

603-654-3210 • 208 Pettingill Hill Road, Lyndeborough, NH

